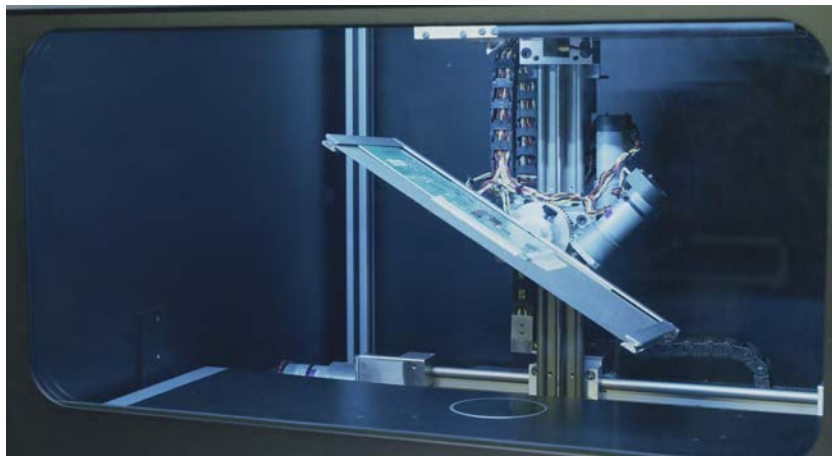
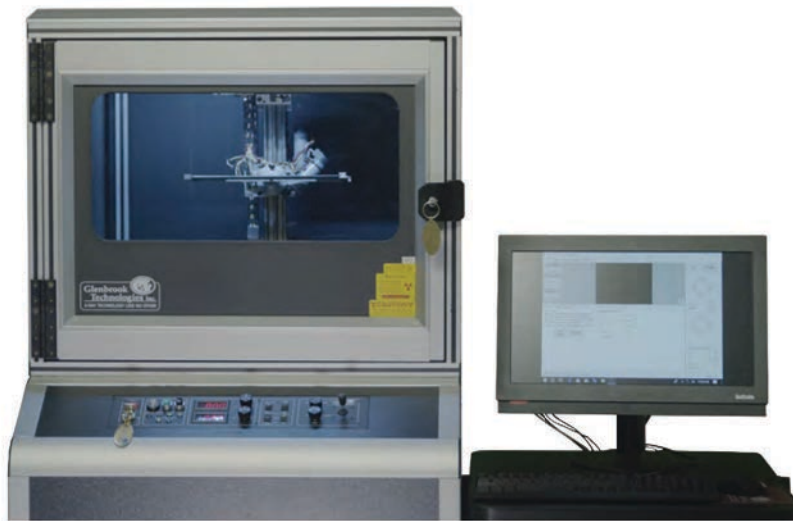


JewelBox 70T & 90T

With Programmable Motion Control

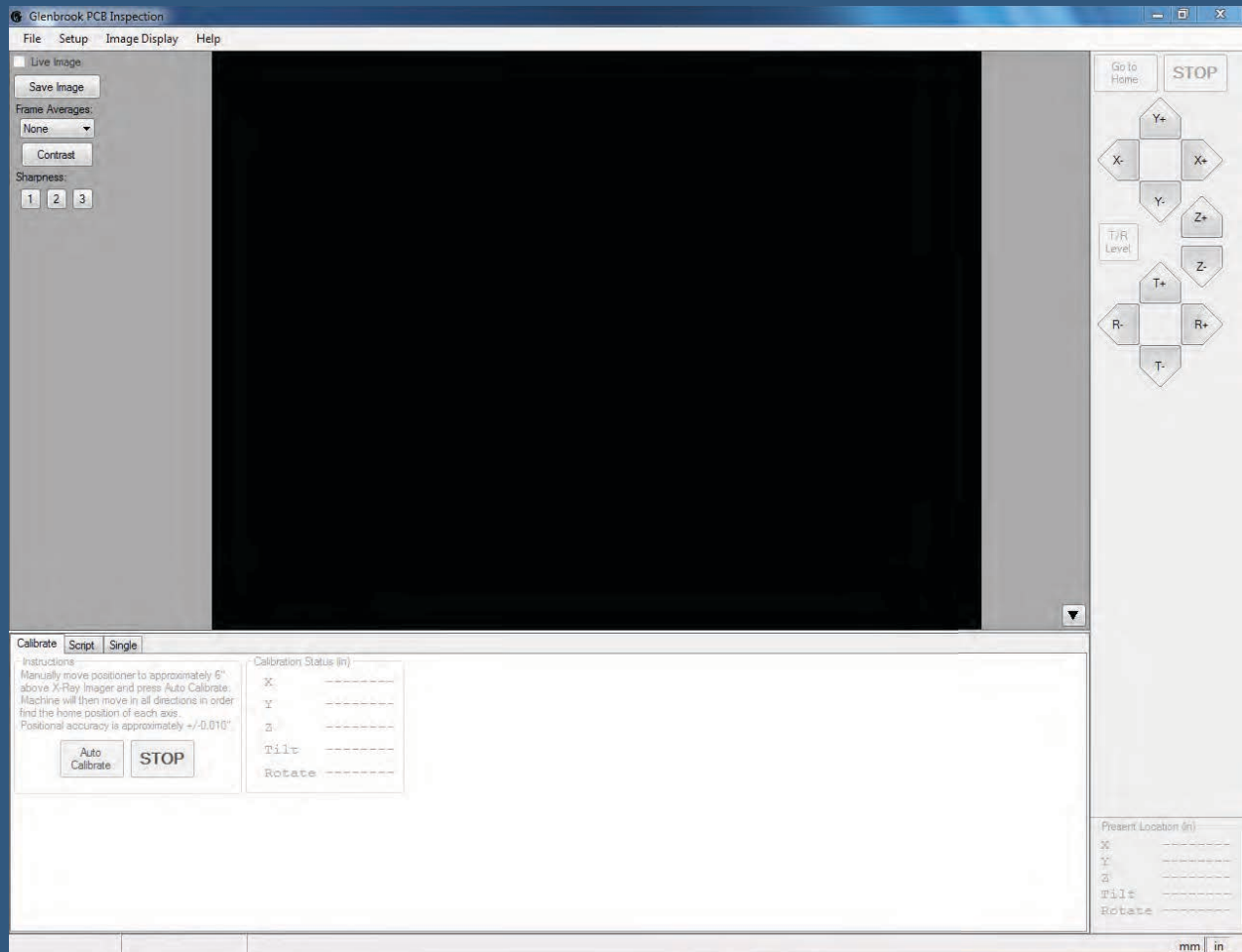
For automated positioning of the stage to a series of pre-programmed positions for automated inspection applications



- Precision motion with X-Y-Z accuracy within +/- .005"
- Designed to be retrofit to existing Glenbrook JewelBox 70T and 90T X-Ray Systems



A Simple Graphical User Interface for Operator to Quickly and Easily set up Repeatable Steps for X-ray Inspection



Directions

Simply, add location by using joystick to reposition to different areas of the device and store the coordinates in X-Y-Z axes, rotation and tilt. After generating the script, simply name and save the file. Each time you inspect the same type of device, pull up the saved script and run to repeat the program.

The software can be configured to save an image at each location for offline viewing.

