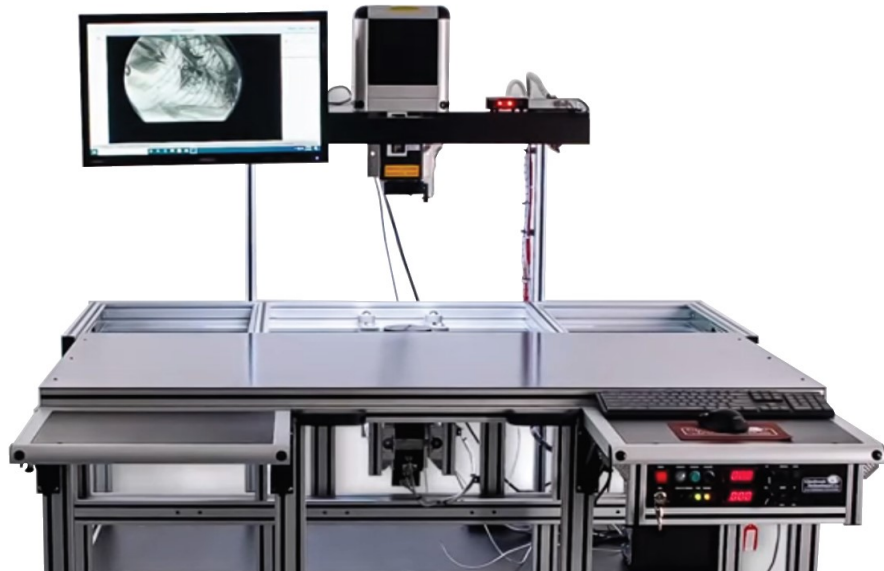
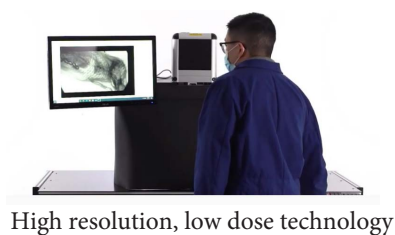


The New Platform-LabScope™

Magnification Fluoroscopy for Large Animal-Based Research



Glenbrook's BenchTop LabScope has distinguished itself in global research laboratories for its role in life saving, small animal, pre-clinical research. The New Platform-LabScope will now permit the same high resolution, low dose technology to be applied to larger animals such as pigs, dogs and primates.

Our latest innovation, The Platform-Labscope is a high-resolution, low dose micro-fluoroscopic system with a 5-10 micron focal spot x-ray tube employing Glenbrook's patented x-ray imaging technology. This extensive system includes a 60" x 29" platform for placement for a larger animal and can support up to 200 lbs. The platform also extends to 24" for easy loading of an animal. The Platform-Labscope also has an adjustable 0-50 kv, 5 or 10 micron focal spot x-ray tube. And a manual positioner allows an operator to manually scan 20" x 24".

Our new design has a 12" clearance between the platform and x-ray source. A magnetic lead vinyl curtain provides full x-ray shielding around the entire system that can quickly be removed and then reattached. For ease of use, foldable shelves allow the machine to be moved through a standard 40" doorway. The machine is available with 50 mm or 100mm diameter field of view x-ray camera.

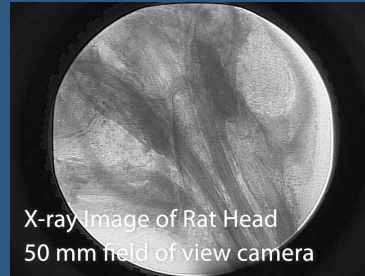
Our new design has a 12" clearance between the platform and x-ray source. A magnetic lead vinyl curtain provides full x-ray shielding around the entire system that can quickly be removed and then reattached. For ease of use, foldable shelves allow the machine to be moved through a standard 40" doorway. The machine is available with 50 mm or 100mm diameter field of view x-ray camera.



Large animal imaging with extraordinarily high resolution and variable magnification

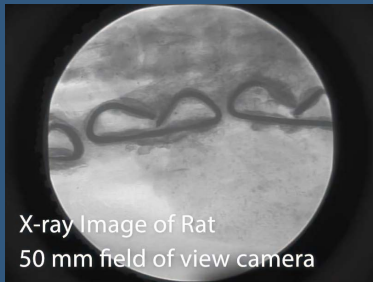


Large rabbit artery with guide wire



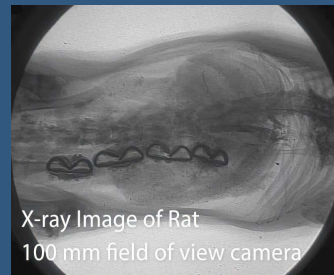
X-ray Image of Rat Head
50 mm field of view camera

Rat's head 50 mm



X-ray Image of Rat
50 mm field of view camera

Rat's image 50 mm



X-ray Image of Rat
100 mm field of view camera

Rat's image 100 mm

Specifications

- **Operating voltage:** 120v/220v/50-60Hz
- **Anode voltage:** 0 to 30 kV adjustable
- **Anode current:** 200 micro-amps adjustable
- **Field of view:** 25, 50, 75 or 100 mm diameter. Dual X-ray Camera Design is also available that combining the two X-ray cameras in one system. Switch between a 50 mm and 100 mm diameter field of view x-ray camera quickly and easily depending on if you need more magnification or want more of an animal in one image.
- **Base Resolution:** 20 line pairs per millimeter
- **Magnification:** 7 to 50 X (variable)
- **Focal spot size:** 5 or 10 microns
- **Dimensions:** 60" x 29" platform
- **Warranty:** 1 year

